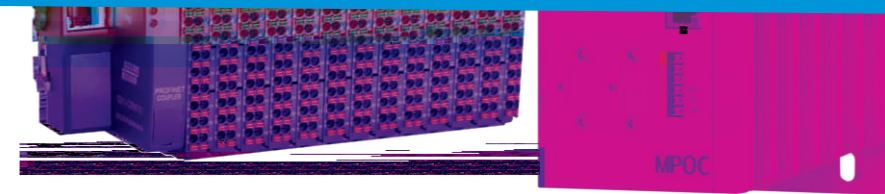
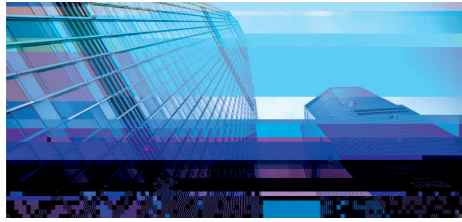


GUID





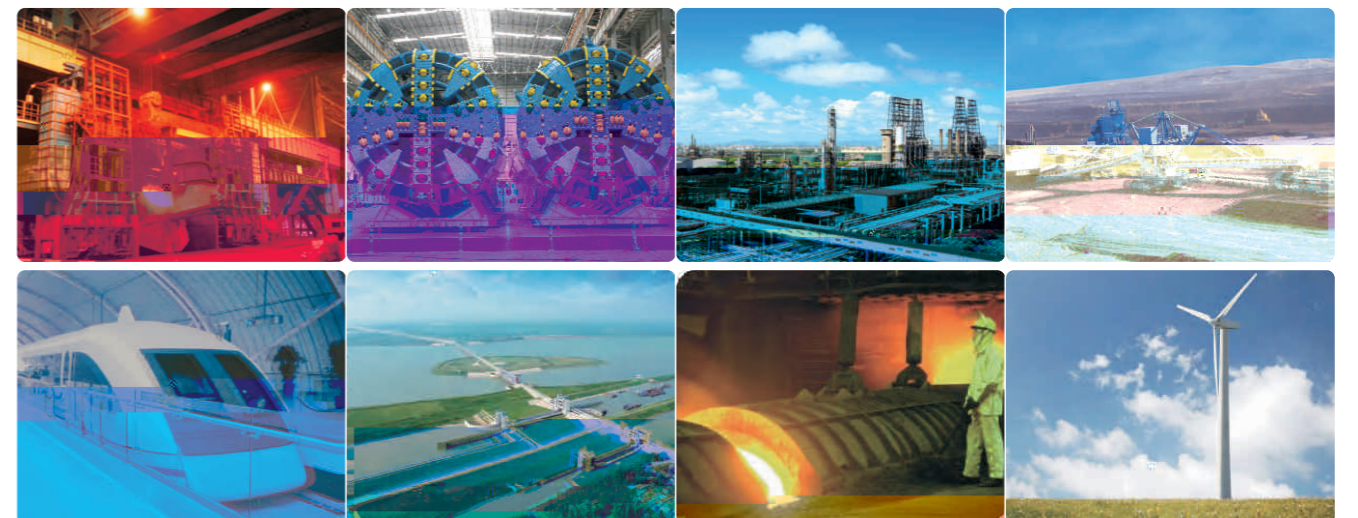
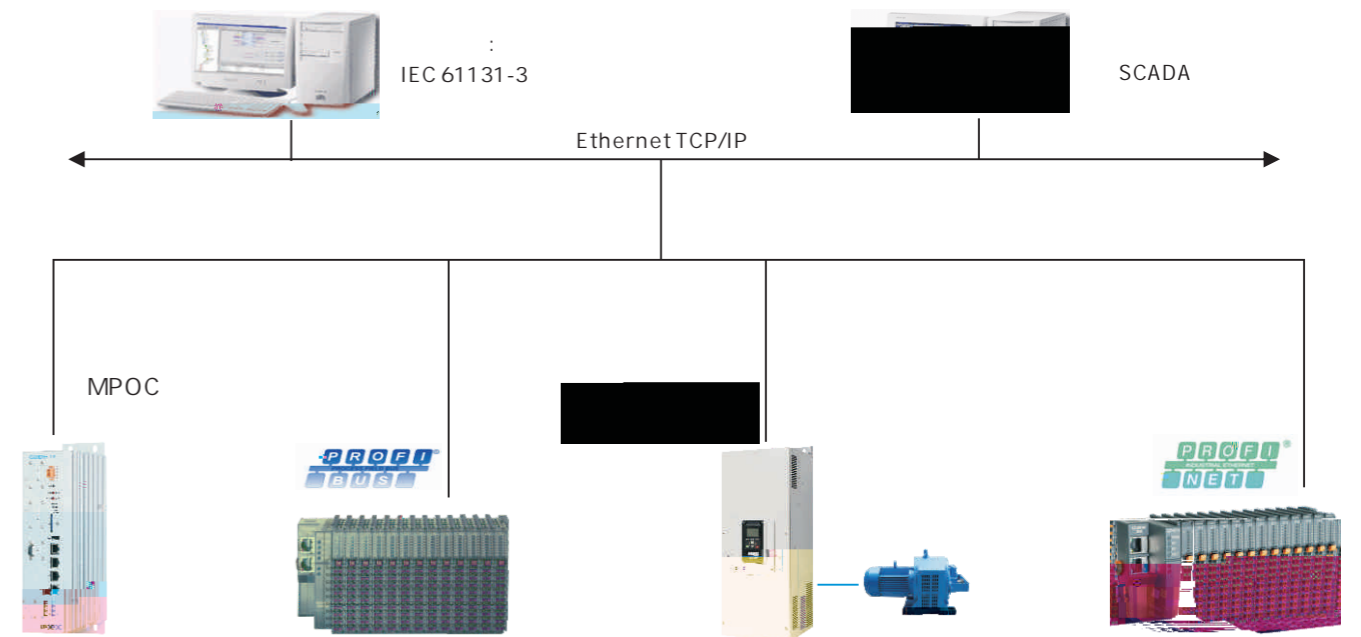
ABOUT US

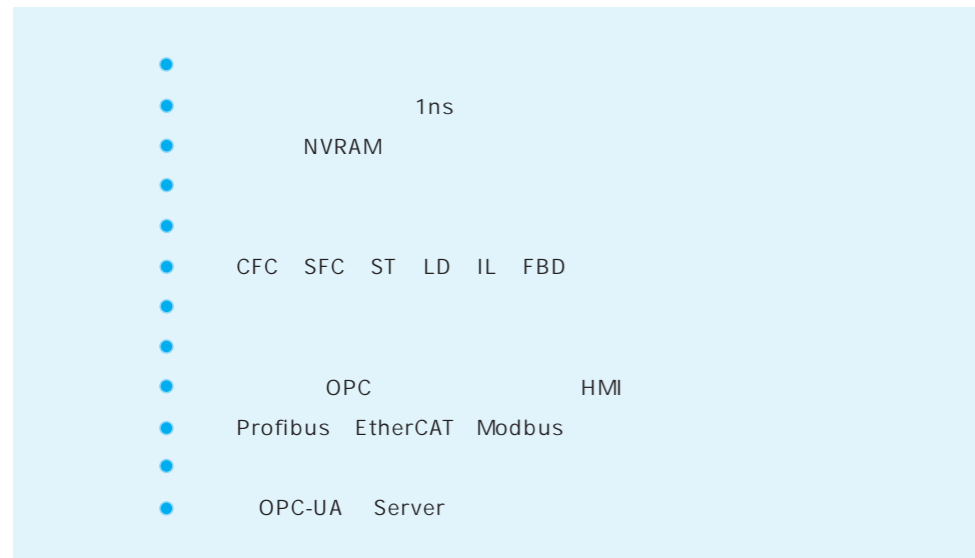
301633

" "

MPOC PLC

MPOC PLC





MPOC PLC

		5cm	5cm
		-5 ~ -55	0.5 /min
		5% ~ 95%	
			700W/m ² 70~106kPa
		2	
		2	
		3000	
			5.8m/s ² 0.6g
		-30 ~ -60	1 /min
		5% ~ 95%	
			6
		-30 ~ -60	
		40	95%
			9~200Hz 15m/s 0.6g ²

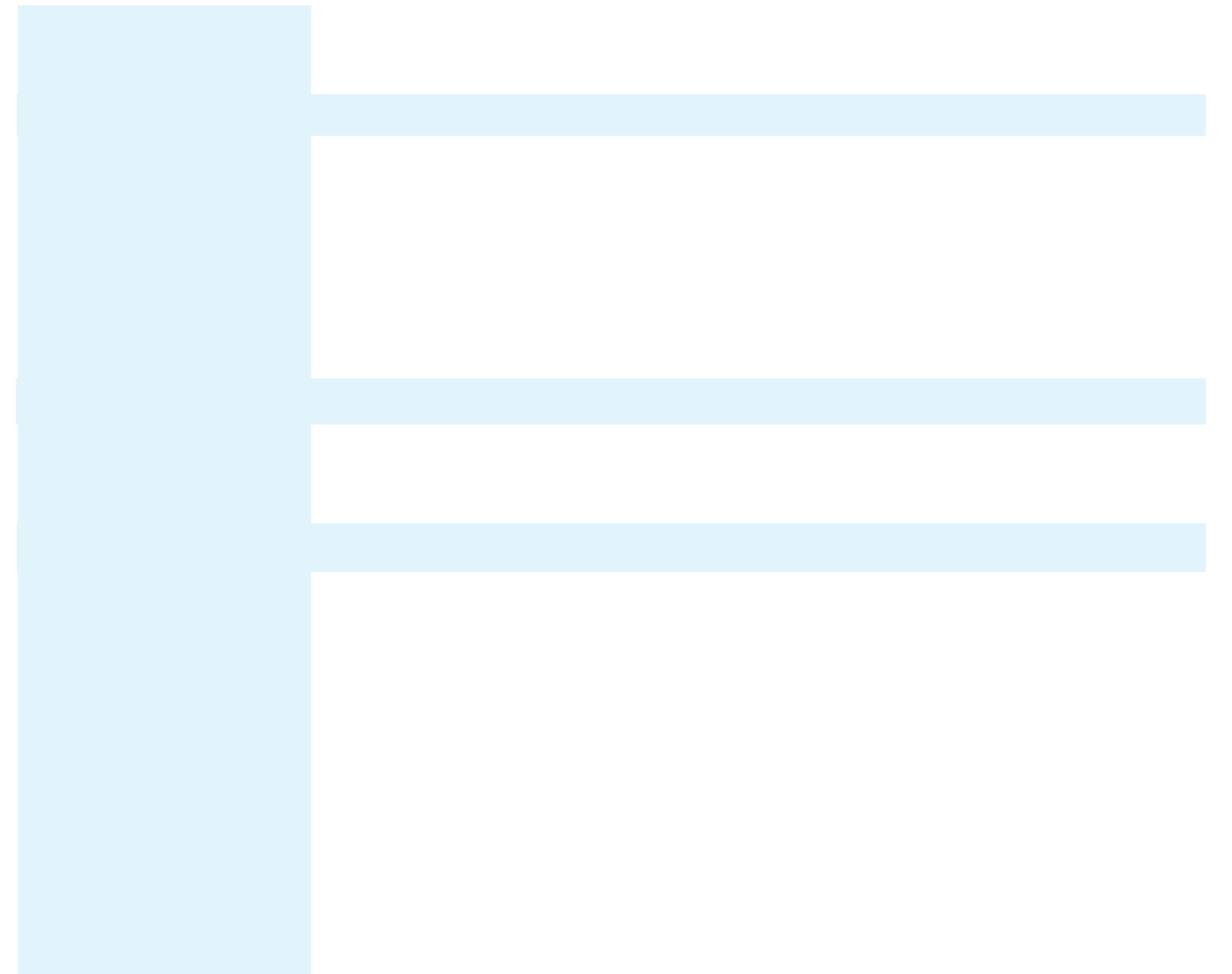
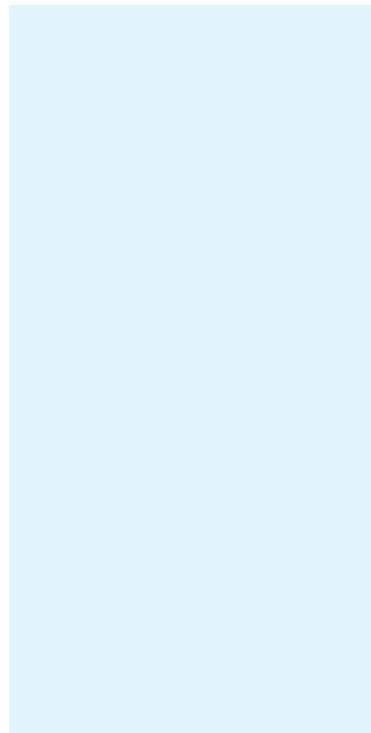
CPU

	MPOC21-B204A0-00	4	DP
	MPOC21-B204D1-00	4	1 DP
	MPOC21-B206A0-00	4	1 DP
	MPOC21-B206D1-00	4	1 DP
	CPU	1.2GHz	32KB L1
			512MB DDR2
			1ns
			1GB
NVRAM			512KB
			IEC61131-3 (CFC SFC ST LD IL FBD)
			EtherCAT, Profibus, Profinet, EthernetIP, Modbus, OPCUA
			× 4
			× 2
			USB× 1
			SD × 1
			Profibus-DP / × 4 Profinet / × 8
			× 1
			× 1
			× 1
			24Vdc± 10%
			24W
IP			IP20
			249.8mm ()x174mm ()x81.5mm ()

MPOC

ProfiNet

		ProfiNet	
		ProfiNet	cifXLC pr s
		Mini PCI Express	ProfiNet
		Mini PCI Express	
		ProfiNet	
		10BASE T/100BASE-TX	
		AIFX-RE	X4 (JST BM20B-SRDS-G-TFC 1.0mm)
		0°C...+55°C (0.5m/s)
		0°C...+70	
		10%...95%	
		UL	2
		xln3Plat-Control	



Pofinet-RT

2 RJ45 100Mbit/s

Profinet-RT/IRT
32 GD11

XML
512DI/512DO 128AI/128AO

2 2

	GD11-C2PNT13		
	2	RJ45	24VDC
	RJ45		
/	24VDC	10A	
	10mA		
+5VDC	2A	16	GD11-PS1AA13
	Profinet-RT		
IP			
	255		
4	V	ü	10 0 9 e
IO	x)	
	+24V	BF	SF NET
		-20-60	5% -90%
(x x)	50x 82x 102 mm		

Profibus-DP

1 DB9 9.6K-12Mbps

Profibus-DP
32 GD11

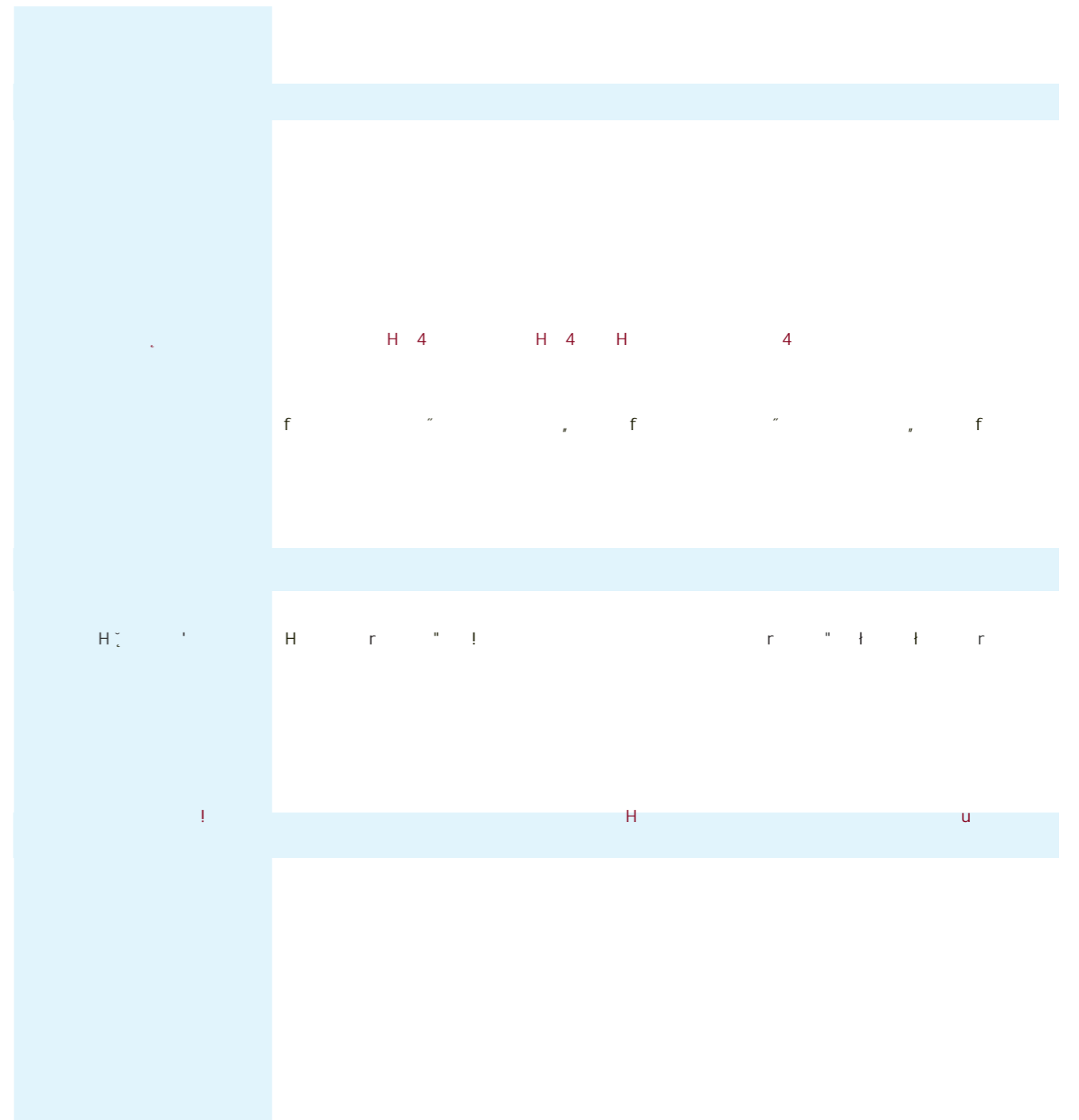
512DI/512DO 128AI/128AO

GD11-DI
32
wellbus

200us

5VDC	
	300m
	x 4 4
" 0	nA
D. "	2.5mA H b
	8) 4-6ms(32
	8) 4-6ms(32
	A(r III(r r !
	00VDC
	L T 2 e x
	LED

GD11-DQ
wellb



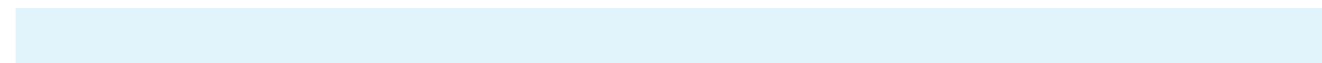
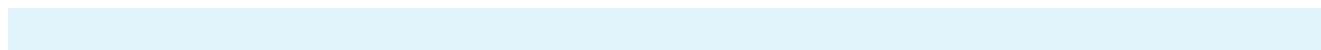
GD11-AT wellbus

32

2 4

16 8

XML



MPOC



1 MPO

